

cala la capu .



G



D



G



D



ca la ca-pu to-ta-ru la co-ppu-la te pa-re e ca - la la ca-pu to-ta-ru la



G



D



G



co-ppu-la te pa-re ca li bian-chi bian-chi pi-gghia e li niu-ri nu la-ssa-re ca li



D



G



D



bian-chi bian-chi pi-gghia e li niu-ri nu la-ssa-re e su - na-mu la ta-ran-tel-la ca sta



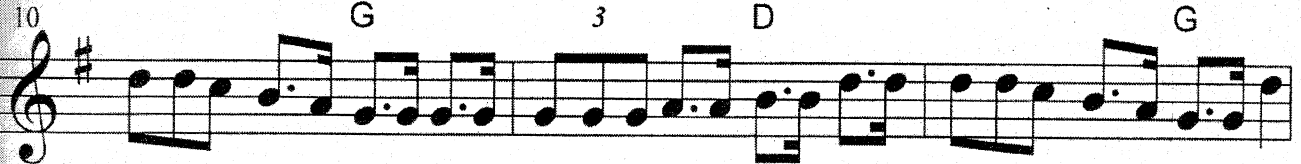
G



D



G



bal-ja la mas-sa-rel-la e su - na-mu lu ta-ran-to-ne ca sta bal-ja lu mas-sa-ro-ne e



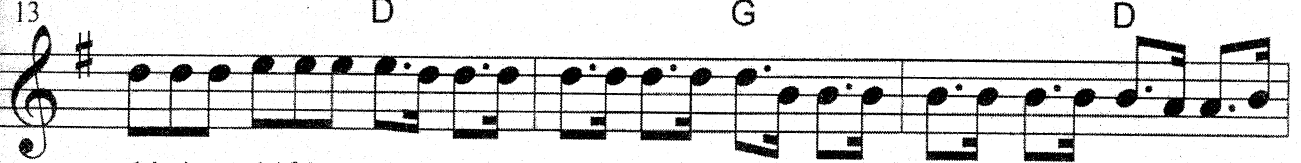
D



G



D



chi-ri-cu chi-ri-cu bal-la ca sta bal-la lu sca-lo-ru ca du - mi-ni-ca ci ol - e te le



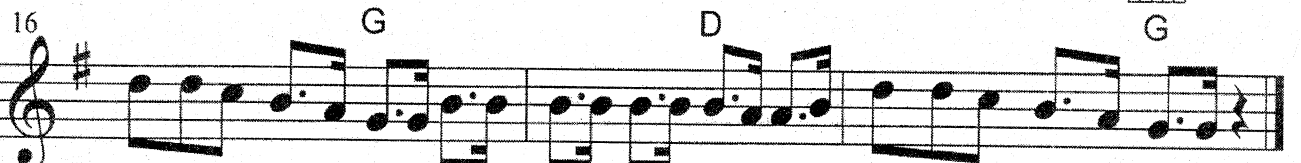
G



D



G



cca-ŷtu le scar-pe no-e ca du - mi-ni-ca ci ol - e te le cca-ŷtu le scar-pe no - e